

CONTENTS

1. Key Economic Indicators-Philippines 2002
Key Data of Cement Industry - 2002
2. Installed Capacities of Cement Plants by Company, 2002
3. Cement Production Vs. Cement Capacity by Company, 2002
Clinker Production Vs. Cement Capacity by Company, 2002
4. Clinker and Cement Production by Company, 2002
Domestic Cement Sales by Company, 2002
5. Domestic Cement Sales by Month, 2002
Imports and Exports, 2002
6. Cement Production/Sales by Area 1992-2002
7. Cement Sales by Type 1992-2002
8. Cement Exports by Destination
9. Cement Imports by Origin
10. Philippine Cement Industry, 1992-2002
11. Cement Consumption, Construction Growth Rate,
Population and Per Capita Consumption 1992-2002
12. 2001 Asean Cement Industry in Brief
- 13, 14 & 15. Philippine Cement Manufacturers Corporation
Directory of Cement Companies

KEY ECONOMIC INDICATORS-PHILIPPINES, 2002

POPULATION	: 81.78 M
PER CAPITA GDP	: P13,511.00
ANNUAL GDP	: P1,034 B
ANNUAL GDP GROWTH RATE	: 4.6%
CONSTRUCTION SECTOR GDP	: P93.6 B
GROWTH IN CONSTRUCTION SECTOR	: 0%
INFLATION RATE	: 3.1%

KEY DATA OF CEMENT INDUSTRY, 2002

NUMBER OF MANUFACTURERS	: 17
NUMBER OF KILNS	: 43
ANNUAL CAPACITY OF KILNS	: 21.922 Million Tonnes
ANNUAL CAPACITY OF MILLS	: 26.782 Million Tonnes
TOTAL CLINKER PRODUCTION	: 12.620 Million Tonnes
TOTAL CEMENT PRODUCTION	: 13.397 Million Tonnes
TOTAL DOMESTIC CEMENT SALES (By Manufacturers Only)	: 12.263 Million Tonnes
CLINKER IMPORTS	: 307 Thousand Tonnes
CLINKER EXPORTS	: 453 Thousand Tonnes
CEMENT IMPORTS	
1) By Manufacturers	: None
2) By Traders	: 338 Thousand Tonnes
CEMENT EXPORTS	: 1.035 Million Tonnes
AVERAGE EX-PLANT PORTLAND CEMENT PRICE (Ending Dec.' 02)	: P2,125.00 per Tonne : P85.00 per 40-Kg. Bag
PER CAPITA CEMENT CONSUMPTION	: 154.1 kgs.

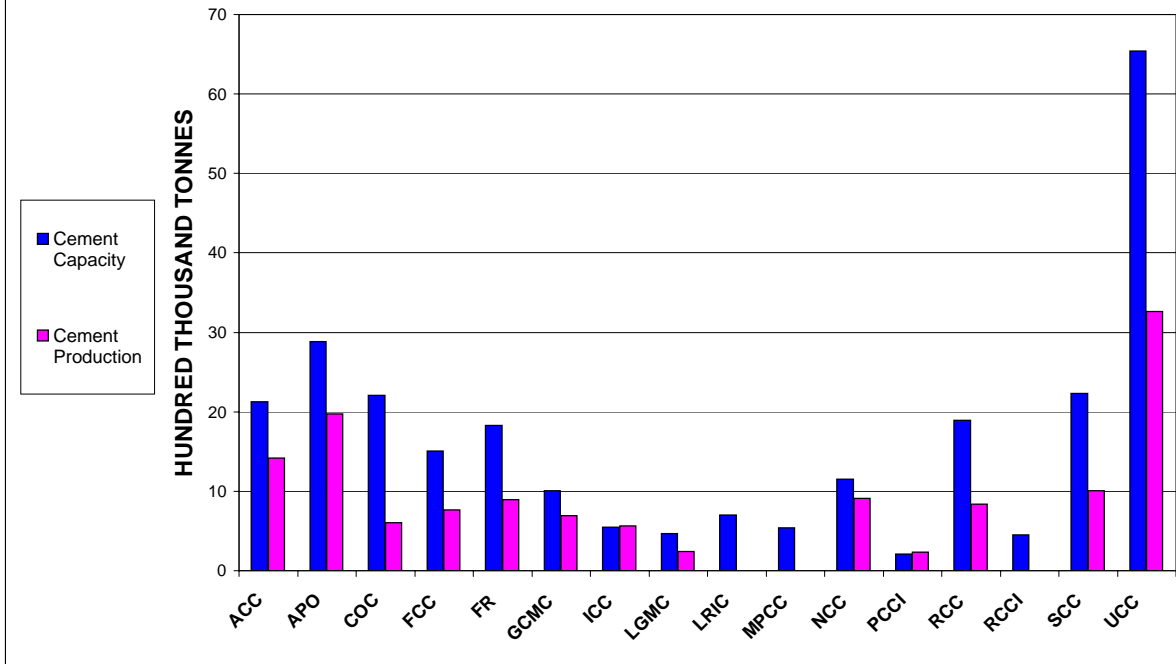
**INSTALLED CAPACITIES OF CEMENT PLANTS
BY COMPANY, 2002**

(Unit: Thousand Tonnes)

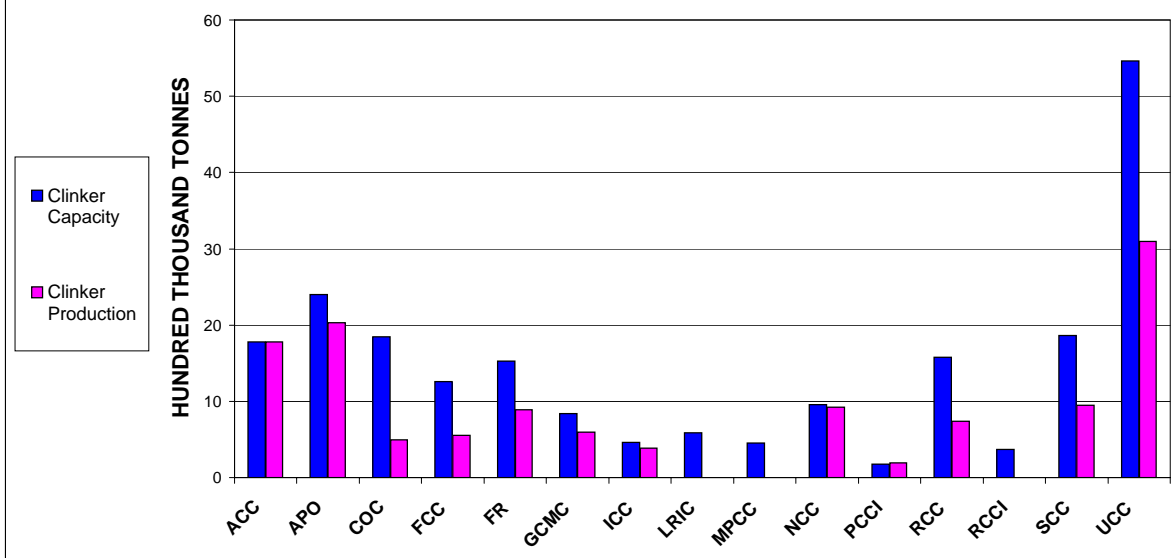
COMPANY		KILNS		TYPE OF PROCESS	ANNUAL CAPACITY		
		NO.	AGE		CLINKER		CEMENT
1. APO CEMENT CORPORATION	(APO)	1	32	Dry	750		
		<u>1</u> 2	3	Dry	<u>1,650</u>	2,400	2,880
2. CONTINENTAL OPERATING CORPORATION	(COC)						
a) Norzagaray, Bulacan		1	28	Dry	480		
		<u>1</u> 2	3	Dry	<u>990</u>	1,470	1,764
b) Tanay, Rizal		1	32	Wet		378	454
3. FORTUNE CEMENT CORPORATION	(FCC)	1	3	Dry	900		
		<u>1</u> 2	30	Dry	<u>360</u>	1,260	1,512
4. FR CEMENT CORPORATION	(FR)	1	4	Dry	990		
		1	37	Semi-Dry	87		
		1	37	Semi-Dry	93		
		<u>1</u> 4	36	Semi-Dry	<u>360</u>	1,530	1,836
5. GOODFOUND CEMENT CORPORATION *	(GCC)	1	2	Dry		350	420
6. GRAND CEMENT MANUFACTURING CORPORATION	(GCMC)	1	2	Dry		840	1,008
7. ILIGAN CEMENT CORPORATION	(ICC)	1	31	Dry		465	558
8. LIMAY GRINDING MILL CORPORATION	(LGMC)	-	-	-			475
9.LLOYDS RICHFIELD INDUSTRIAL CORPORATION	(LRIC)	1	42	Semi-Dry	127.5		
		1	36	Semi-Dry	127.5		
		<u>1</u> 3	31	Wet	<u>336</u>	591	709
10.MINDANAO PORTLAND CEMENT CORPORATION	(MPCC)	1	40	Dry		450	540
11. NORTHERN CEMENT CORPORATION	(NCC)	1	31	Dry	480		
		<u>1</u> 2	31	Dry	<u>480</u>	960	1,152
12. PACIFIC CEMENT COMPANY, INC.	(PCCI)	1	37	Dry		180	216
13. REPUBLIC CEMENT CORPORATION	(RCC)	1	41	Dry	127.5		
		1	38	Dry	127.5		
		1	34	Dry	330		
		<u>1</u> 4	4	Dry	<u>990</u>	1,575	1,890
14. RIZAL CEMENT COMPANY, INC.	(RCCI)	1	47	Wet	114		
		1	43	Wet	111		
		<u>1</u> 3	37	Wet	<u>150</u>	375	450
15. SOLID CEMENT CORPORATION	(SCC)	1	8	Dry	990		
		1	32	Wet	435		
		<u>1</u> 3	35	Wet	<u>435</u>	1,860	2,232
16. UNION CEMENT CORPORATION	(UCC)						
La Union Plant		1	8	Dry	720		
		1	38	Wet	93		
		1	40	Wet	93		
		<u>1</u> 4	44	Wet	<u>114</u>	1,020	1,224
Bulacan Plant (San Ildefonso)		1	32	Semi-Dry		234	281
(Norzagaray)		1	35	Dry	810		
		<u>1</u> 2	5	Dry	<u>1,650</u>	2,460	2,952
Davao Plant		1	18	Dry	533		
		1	5	Dry	1,050		
		<u>1</u> 3	33	Wet	<u>159</u>	1,742	2,091
Lugait Plant (Alsons)	(ACC)	1	31	Dry	582		
		<u>1</u> 2	3	Dry	<u>1,200</u>	1,782	2,138
TOTAL		43				21,922	26,782

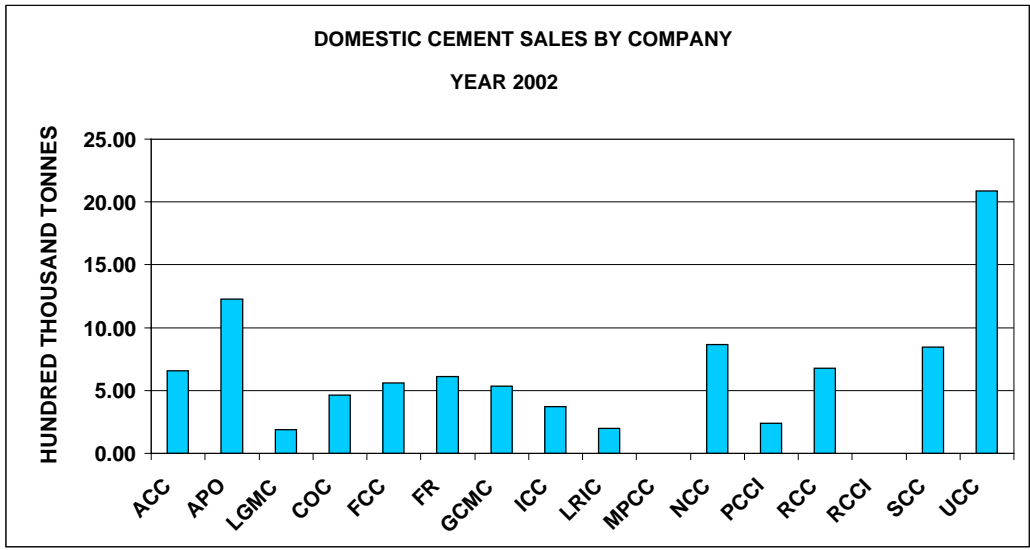
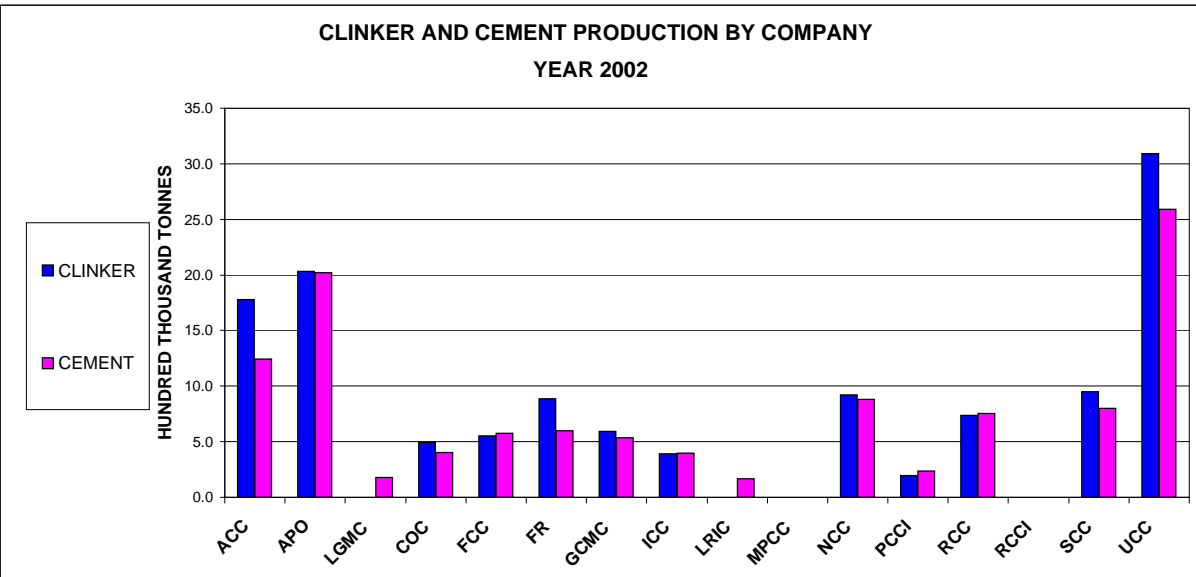
* Non-member

CEMENT PRODUCTION VS. CEMENT CAPACITY BY COMPANY YEAR 2002

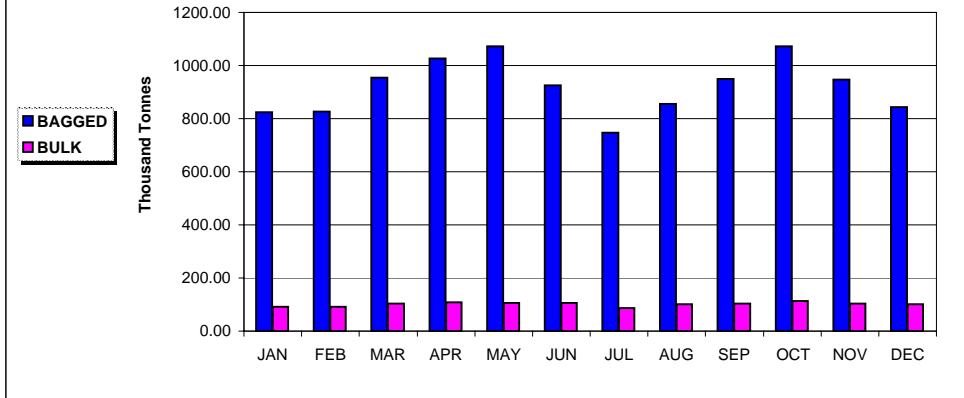


CLINKER PRODUCTION VS. CLINKER CAPACITY BY COMPANY YEAR 2002





**DOMESTIC CEMENT SALES BY MONTH
BAGGED AND BULK
YEAR 2002**



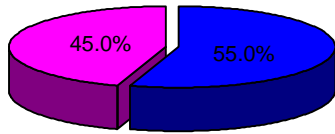
IMPORTS AND EXPORTS

(Excluding White Cement)

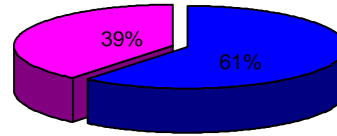
Unit: (In Metric Tonnes)

CEMENT IMPORTS		CLINKER IMPORTS	
Country of Origin	Quantity	Country of Origin	Quantity
1. Japan	161,600	1. Japan	79
2. Indonesia	144,000	2. Indonesia	228
3. Thailand	32,000		
Total	337,600	Total	307
CEMENT EXPORTS		CLINKER EXPORTS	
Country of Destination	Quantity	Country of Destination	Quantity
1. Brazil	75	1. Vietnam	136,480
2. Cambodia	30,913	2. Bangladesh	316,416
3. Dominican Republic	17,000		
4. Hongkong	152,000		
5. Indonesia	111,202		
6. Mauritius	27,500		
7. Marshall Island	52		
8. Nigeria	176,000		
9. Palau	143,889		
10. Singapore	27,000		
11. Taiwan	122,946		
12. USA	226,064		
Total	1,034,641	Total	452,896

PRODUCTION BY AREA (2002)



SALES BY AREA (2002)



■ Luzon
■ Visayas & Mindanao

CEMENT PRODUCTION/SALES BY AREA

(Unit: Thousand Tonnes)

Area \ Year		Year										
		1992	1993	1994	1995	1996	1997	1998	1999	2000	2001	2002
LUZON	PROD.	4,834	5,517	6,358	7,063	8,169	9,705	7,937	6,958	6,167	5,723	7,372
	SALES	4,784	5,520	6,362	7,067	8,076	9,796	7,799	7,757	6,639	6,252	7,469
VISAYAS & MINDANAO	PROD.	1,833	2,444	3,213	3,491	4,260	4,976	4,951	5,599	5,792	5,655	6,025
	SALES	1,820	2,488	3,234	3,542	4,197	4,740	5,001	4,803	5,182	5,093	5,829
TOTAL	PROD.	6,667	7,961	9,571	10,554	12,429	14,681	12,888	12,557	11,959	11,378	13,397
	SALES	6,604	8,008	9,596	10,609	12,273	14,536	12,800	12,560	11,821	11,345	13,298

Note: Sales: Domestic Sales Plus Exports

CEMENT SALES BY TYPE

(Unit: Thousand Tonnes)

YEAR	PORTLAND CEMENT (TYPE-1)	PERCENT (%)	BLENDED CEMENT (TYPE-P)	PERCENT (%)	TOTAL	PERCENT (%)
1992	4,578	69	2,026	31	6,604	100
1993	6,001	75	2,007	25	8,008	100
1994	7,384	77	2,212	23	9,596	100
1995	7,704	73	2,905	27	10,609	100
1996	9,276	76	2,997	24	12,273	100
1997	11,708	81	2,828	19	14,536	100
1998	10,609	83	2,191	17	12,800	100
1999	11,014	88	1,546	12	12,560	100
2000	10,618	90	1,203	10	11,821	100
2001	10,437	92	908	8	11,345	100
2002	12,009	90	1,289	10	13,298	100

CEMENT EXPORTS BY DESTINATION

(Unit: Thousand Tonnes)

DESTINATION		1982	1983	1984	1985	1986	1987	1988	1989	1990	1991	1992
REGION	COUNTRY											
ASIA	CHINA	-	-	9	112	30	-	-	-	-	-	-
	TAIWAN	-	-	-	-	-	-	-	-	588	830	123
	HONGKONG	71	-	-	20	-	-	-	125	209	127	152
	SINGAPORE	5	23	-	-	-	-	-	415	132	130	27
	THAILAND	-	-	-	-	-	-	-	-	-	-	-
	VIETNAM	55	-	-	-	1	12	-	-	-	-	-
	BRUNEI	7	-	-	-	-	-	-	-	-	-	-
	MALAYSIA	-	-	-	-	-	-	-	-	-	-	-
	INDONESIA	205	72	19	-	-	-	-	-	74	100	111
	AUSTRALIA	-	-	-	-	-	-	-	-	-	-	-
	TOTAL	343	95	28	132	31	12	-	540	1,003	1,187	413
MID-EAST	PAKISTAN	12	-	-	-	-	-	-	-	-	-	-
	MIDDLE EAST	-	-	-	-	-	-	-	36	-	-	-
	BANGLADESH	112	12	108	235	74	27	-	45	-	29	-
	CAMBODIA	-	-	-	-	-	-	-	1	13	24	31
	YEMEN	-	-	-	-	-	-	-	-	-	21	-
	LAOS	-	-	-	-	-	-	-	-	-	-	-
	TOTAL	124	12	108	235	74	27	-	82	13	74	31
AMERICAS	NOUMEA, CAL.	1	-	-	-	-	-	-	-	-	-	-
	USA	-	-	-	-	-	-	-	-	161	380	226
	PALAU	-	-	-	1	-	-	3	3	1	8	144
	TOTAL	1	-	-	1	-	-	3	3	162	388	370
OTHERS (AFRICA & OCEANA)	MAURITIUS	-	-	-	-	-	-	-	-	-	-	28
	INDIA	110	15	-	-	-	-	-	-	-	-	-
	NIGERIA	-	-	-	-	-	-	83	66	165	215	176
	NEPAL	14	8	5	20	-	-	-	-	-	-	-
	DOM. REP.	-	-	-	-	-	-	-	-	-	-	17
	TOTAL	124	23	5	20	0	0	83	66	165	215	221
	GRAND TOTAL	592	130	141	388	105	39	86	691	1,343	1,864	1,035
	BULK	-	-	-	-	-	-	86	691	1,343	1,258	846
	BAGGED	592	130	141	388	105	39	-	-	-	606	189

Remarks: There were no exports from 1988 to 1997.

CEMENT IMPORTS BY ORIGIN
1992-2002

(Unit: Thousand Tonnes)

ORIGIN	1992	1993	1994	1995	1996	1997	1998	1999	2000	2001	2002
INDONESIA	139	-	5	-	10	-	-	-	369	1,260	144
CHINA	161	-	-	149	306	292	88	32	5	5	-
KOREA	32	-	-	5	7	-	11	-	-	-	-
IRAQ	-	-	-	-	-	-	-	-	-	-	-
JAPAN	156	-	10	98	6	33	81	185	303	306	162
TURKEY	85	-	-	-	12	-	-	-	-	-	-
JORDAN	32	-	-	-	-	-	-	-	-	-	-
THAILAND	32	-	-	-	-	-	-	-	-	-	32
INDIA	29	-	-	-	-	-	-	-	-	-	-
TAIWAN	16	-	-	2	52	10	-	248	902	662	-
HONGKONG	-	-	-	-	54	17	-	9	-	-	-
MEXICO	-	-	-	226	210	-	-	-	-	-	-
MALAYSIA	-	-	-	-	23	-	-	-	-	-	-
SINGAPORE	-	-	-	-	0.240	-	-	-	-	-	-
TOTAL	682	0	15	480	680	352	180	474	1,579	2,233	338

PHILIPPINE CEMENT INDUSTRY, 1992 - 2002
(Excluding White Cement)

Unit: Thousand Tonnes

YEAR	CAPACITY		PRODUCTION				DOMESTIC SALES *		IMPORTS				EXPORTS			
	CLINKER	CEMENT	CLINKER		CEMENT				CLINKER		CEMENT		CLINKER		CEMENT	
	QTY.	QTY.	QTY.	%	QTY.	%	QTY.	%	QTY.	%	QTY.	%	QTY.	%	QTY.	%
1992	7,775	8,552	5,262	99	6,667	96	6,604	95	579	349	682	6,820	None	-	None	-
1993	8,364	9,200	6,217	118	7,961	119	8,003	121	554	96	None	-	None	-	None	-
1994	9,955	10,950	7,885	127	9,571	120	9,596	120	435	79	10	-	None	-	None	-
1995	10,268	11,295	8,800	112	10,554	110	10,609	111	525	121	480	4,800	None	-	None	-
1996	12,818	14,100	9,642	110	12,429	118	12,273	116	1,250	238	680	142	None	-	None	-
1997	16,673	18,340	11,566	120	14,681	118	14,536	118	1,267	101	352	52	None	-	None	-
1998	21,368	25,642	11,101	96	12,888	88	12,714	87	239	19	180	51	None	-	86	-
1999	21,968	26,362	10,492	95	12,558	97	11,869	93	311	130	474	263	None	-	691	803
2000	22,318	26,782	11,160	106	11,959	95	10,478	88	None	-	1,579	333	None	-	1,343	194
2001	21,922	26,782	10,394	93	11,378	95	9,481	90	103	-	2,233	141	None	-	1,864	139
2002	21,922	26,782	12,620	121	13,397	118	12,263	129	307	298	338	15	264	100	1,035	56

Notes: (*) Sales by Cement Manufacturers only
(%) Percent over previous year

**CEMENT CONSUMPTION, CONSTRUCTION GROWTH RATE,
POPULATION AND CEMENT PER CAPITA CONSUMPTION
1992 - 2002**

YEAR	CEMENT CONSUMPTION (In Million M.T.)	CONST. GROWTH (%)	POPULATION (Millions)	PER CAPITA CONSUMPTION (Kgs.)
1992	7.286	2.8	64.26	113.4
1993	8.003	5.7	65.70	121.8
1994	9.606	8.9	68.60	140.0
1995	11.089	6.5	68.30	162.4
1996	12.953	10.9	70.00	185.0
1997	14.888	16.2	71.50	208.2
1998	12.894	-8.1	73.10	176.4
1999	12.344	-2.1	76.78	160.8
2000	12.057	-6.0	76.50	157.6
2001	11.714	0.5	77.90	150.3
2002	12.601	0	81.78	154.1

2002 ASEAN CEMENT INDUSTRY IN BRIEF
(Excluding White Cement)

Quantity in Thousand Tonnes

	INDONESIA	MALAYSIA	PHILIPPINES	SINGAPORE	THAILAND	VIETNAM	BRUNEI
CLINKER PRODUCTION CAPACITY	44,231	17,800	21,922	NA	47,060	13,870	0
CEMENT GRINDING CAPACITY	47,870	28,300	26,782	NA	55,555	23,020	550
CLINKER PRODUCTION	33,248	12,410	12,620	NA	33,919	12,415	0
CEMENT PRODUCTION	30,720	14,010	13,397	NA	29,099	20,021	227
CEMENT DOMESTIC SALES	27,172	11,954	12,263	NA	22,177	20,021	234
AVERAGE DOMESTIC PRICES (Bagged Cement Delivered per Ton)	Rp.540,000	RM 186	P2,412.50	S\$ 80	2,500 Baht	Rotary Kiln VND 750,000 Vertical Kiln VND 630,000	BND 120
YEAR-END EXCHANGE RATE (per US \$1.00)	8,900.00	3.80	54.38	1.75	42.77	15,430.00	1.74

Source: ASEAN Federation of Cement Manufacturers (AFCM)

**PHILIPPINE CEMENT MANUFACTURERS CORPORATION
DIRECTORY OF CEMENT COMPANIES**

1. APO CEMENT CORPORATION

Office Address:

24th Floor, Petron Mega Plaza Building
358 Senator Gil Puyat Avenue, Makati City
Tel: 849-3600; 849-3700
Fax: 849-3619/3679

Plant Address:

Tina-an, Naga, Cebu
Tel: 032-273-3300
Fax: 032-273-9339

2. CONTINENTAL CEMENT CORPORATION

Office Address:

18th Floor, PBCom Tower
6795 Ayala Avenue, corner Herrera St.,
Makati City
Tel: 819-5506 to 15; 8195523 to 26; 28 & 30
Fax: 815-2582; 2668; 2682; 2678

Plant Address:

Barrio Bigte, Norzagaray, Bulacan
Tel: 759-7952 to 59; 719-3840
Fax: 759-7950 to 51

Barrio Balimbing, Tanay, Rizal
Tel: 0912-328-3659
Fax: 0912-328-3659

3. FORTUNE CEMENT CORPORATION

Office Address:

18th Floor, PBCom Tower
6795 Ayala Avenue, corner Herrera St.,
Makati City
Tel: 819-5506 to 15; 8195523 to 26; 28 & 30
Fax: 815-2582; 2668; 2682; 2678

Plant Address:

Mapulo, Taysan, Batangas
Tel: 063-719-3840
Fax: 0912-306-5224

4. FR CEMENT CORPORATION

Office Address:

18th Floor, PBCom Tower
6795 Ayala Avenue, corner Herrera St.,
Makati City
Tel: 819-5506 to 15; 8195523 to 26; 28 & 30
Fax: 815-2582; 2668; 2682; 2678

Plant Address:

Barangay Dalumbayan,
Teresa, Rizal
Tel: 650-6640; 644-8826 to 30
Fax: 650-5171

5. GOODFOUND CEMENT CORPORATION *

Plant Address:

Camalig, Albay

6. GRAND CEMENT MANUFACTURING CORPORATION

Office Address:

6TH Flor, Insular Life Building,
Gorordo Avenue, Cebu City
Tel: 032-231-5333
Fax: 032-231-4825

Plant Address:

South Poblacion,
San Fernando, Cebu City
Tel: 032-231-5333
Fax: 032-231-4825; 254-5242

* Non-member

7. **ILIGAN CEMENT CORPORATION**

Office Address:

18th Floor, PBCom Tower
6795 Ayala Avenue, corner Herrera St.,
Makati City
Tel: 819-5506 to 15; 8195523 to 26; 28 & 30
Fax: 815-2582; 2668; 2682; 2678

Plant Address:

Barrio Kiwalan, Iligan City
Tel: 063-225-7501; 2257712
Fax: 063-225-7201

8. **LIMAY GRINDING MILL CORPORATION**

Office Address:

Unit 2011, Herrera Tower
Herrera St., corner Valero St.,
Salcedo Village, Makati City
Tel: 753-2559 to 61/753-4961 to 62
Fax: 845-1955

Plant Address:

PPI Compound
Limay, Bataan
Tel: 047-244-5929 to 31
Fax: 047-244-5928

9. **LLOYDS RICHFIELD INDUSTRIAL CORPORATION**

Office Address:

18th Floor, PBCom Tower
6795 Ayala Avenue, corner Herrera St.,
Makati City
Tel: 819-5506 to 15; 8195523 to 26; 28 & 30
Fax: 815-2582; 2668; 2682; 2678

Plant Address:

Dungo-an, Danao
Cebu City
Tel: 032-200-3810 to 13
Fax: 032-200-3811

10. **MINDANAO PORTLAND CEMENT CORPORATION**

Office Address:

18th Floor, PBCom Tower
6795 Ayala Avenue, corner Herrera St.,
Makati City
Tel: 819-5506 to 15; 8195523 to 26; 28 & 30
Fax: 815-2582; 2668; 2682; 2678

Plant Address:

Barrio Kiwalan, Iligan City
Tel: 063-519050
Fax: 063-225-1349

11. **NORTHERN CEMENT CORPORATION**

Office Address:

5th Floor ECJ Building, Real corner
Arsobispo St., Intramuros, Manila
Tel: 527-8281; 527-1924
Fax: 527-3931

Plant Address:

Barrio Labayug,
Sison, Pangasinan
Tel: 0912-308-3189
Fax: 0912-312-2770

12. **PACIFIC CEMENT COMPANY, INC.**

Office Address:

29TH Floor, Chatham House Condominium
116 Valero corner Herrera St.,
Salcedo Village, Makati City

Plant Address:

Km. 11, Surigao City
Tel: 086-826-1418
Fax: 086-826-1432

13. **REPUBLIC CEMENT CORPORATION**

Office Address:

18th Floor, PBCom Tower
6795 Ayala Avenue, corner Herrera St.,
Makati City
Tel: 819-5506 to 15; 8195523 to 26; 28 & 30
Fax: 815-2582; 2668; 2682; 2678

Plant Address:

Barrio Minuyan,
Norzagaray, Bulacan
Tel: 0912-334-0291
Fax: 0912-353-2599

14. **RIZAL CEMENT COMPANY, INC.**

Office Address:

24th Floor, Petron Mega Plaza Building
358 Senator Gil Puyat Avenue, Makati City
Tel: 849-3600; 849-3700
Fax: 849-3619/3679

Plant Address:

Binangonan, Rizal
Tel: 652-0114
Fax: 652-0115

15. SOLID CEMENT CORPORATION

Office Address:

24th Floor, Petron Mega Plaza Building
358 Senator Gil Puyat Avenue, Makati City
Tel: 849-3600; 849-3700
Fax: 849-3619/3679

Plant Address:

Barrio Tagbac,
Antipolo, Rizal
Tel: 650-2691 & 98
Fax: 650-4145; 650-0562

16. UNION CEMENT CORPORATION

Office Address:

The Phinma Plaza

39 Plaza Drive, Rockwell Center
Makati City
Tel: 870-0100
Fax: 870-0510
Tel: 898-1980 to 90
Fax: 898-1768 to 69

Plant Address:

La Union Plant:

Barrio Quirion, Bacnotan, La Union
Tel: 072-888-4252
Fax: 072-888-5671

Bulacan Plant:

Barrio Matictic, Norzagaray, Bulacan
Tel: 892-8060 to 62
Fax: 892-8059

Davao Plant:

Barrio Ilang, Davao City
Tel: 082-238-0451 to 54
Fax: 082-238-0309

Lugait Plant - (formerly ALSONS CEMENT):

Barrio Salimbal, Luga-it
Misamis Oriental
Tel: 063-225-8000
Fax: 063-225-8002/8241